

T

A

Č

R

... research useful to society

T A
Č R

**Technology Agency
of the Czech Republic
and the DELTA Programme**

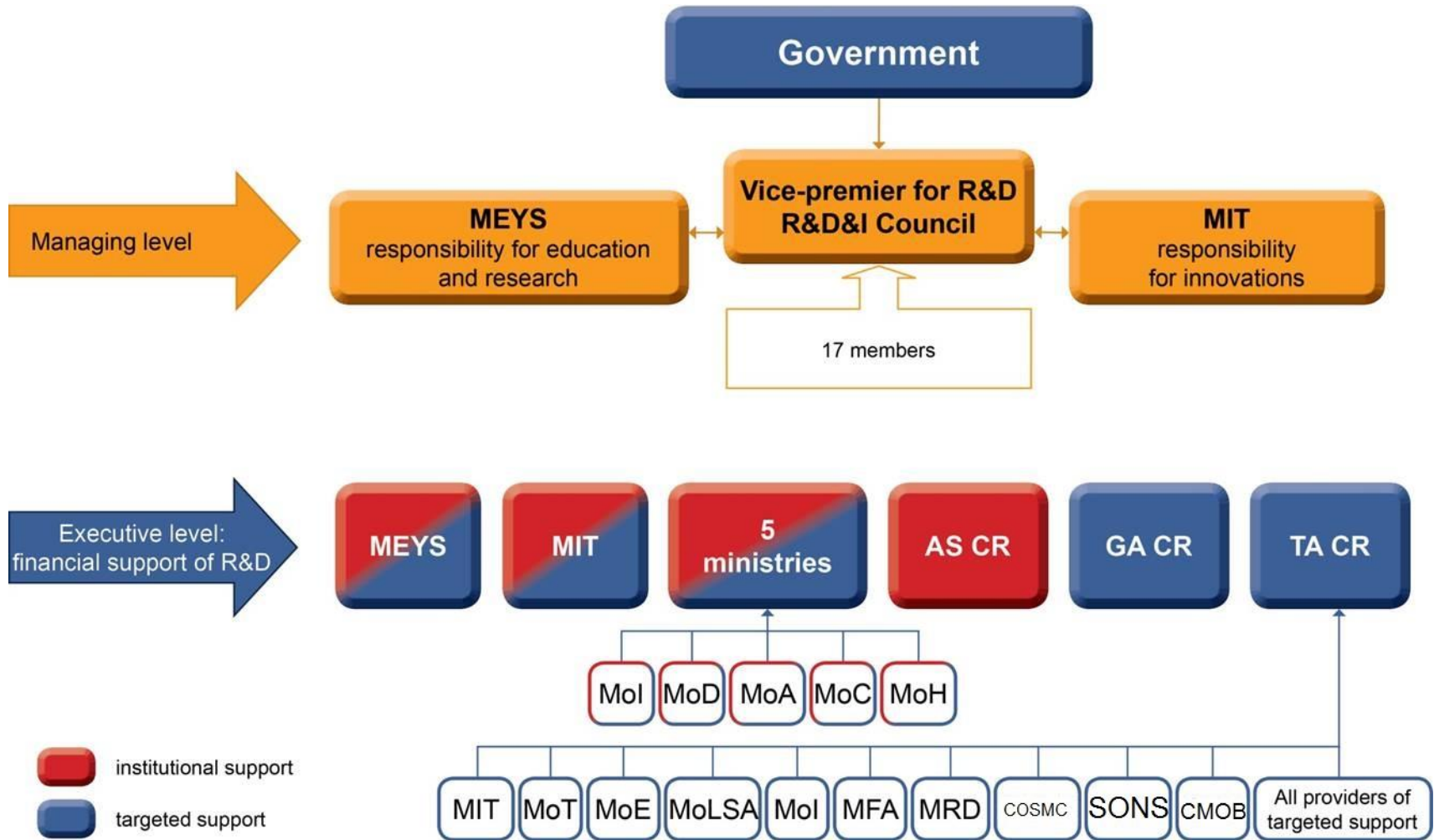
Rut Bízková
Chairwoman of TA CR

*Bratislava, 2nd Symposium on Innovation, cooperation in technology
and international transfer of technology*

21st September 2015

T A
Č R

Management of R&D System in the CR



- Organizational unit of the state and an administrator of a state budget chapter with the effect from 1st July 2009
- Based on the amendment to the Act No. 130/2002 Coll. (Act on support of R&D)
- Tool for the implementation of a reform of R&D system
 - To reduce a number of state budget funding bodies
 - To simplify the administration of the R&D

- To support the applied research, experimental development and innovation in the CR
- To support the cooperation and communication between research organizations and the private sector
- To reduce the fragmentation of targeted support in the CR
- To contribute to increasing the competitiveness and the economic growth of the CR

T A

Č R

TA CR

Tasks and Activities

- The preparation and implementation of programs of applied research, development and innovation
- Comprehensive project management (project selection, monitoring of the performance, evaluation of outputs)
- Providing the targeted support from the state budget
- Consultancy to researchers and users of project results especially in the legal field, financial field and in the field of protection of intellectual property
- Collaboration with ministries that ensure applied research, development and innovation, and similar agencies – both domestic and foreign

TA CR Budget
(in thousands of CZK)

	2015	2016	2017
Targeted support	2 752 511	2 752 511	2 752 511
Of which:			
ALPHA	1 665 255	1 134 835	602 401
BETA	57 000	123 930	
OMEGA	70 499	51 500	35 000
Competence Centres	913 514	894 150	880 448
EPSILON	0	283 477	958 537
GAMMA	36 243	89 000	134 300
DELTA	10 000	175 619	141 823
Institutional support	106 411	106 428	106 444
Overall	2 858 922	2 858 939	2 858 955

T A

Č R

Projects supported by TA CR*

Programme	ALPHA	GAMMA	DELTA	EPSILON	OMEGA	CC	Overall
Submitted	3 501	31	27	725	351	210	4 845
Supported	963	10	4	91	128	34	1 230
Success rate	27,5 %	32,3 %	14,8 %	12,6 %	36,5 %	16,2 %	25,4 %
Supported:							
Expenditures (in mil. CZK)	14 467,2	193,6	63,8	1 451,6	301,6	9 084,0	25 561,7
Support (in mil. CZK)	9 305,5	193,6	45,9	881,0	235,0	6 213,5	16 874,5
Support rate	64,3 %	100,0 %	71,9 %	60,7 %	77,9 %	68,4 %	66,0 %

**4th ALFA, 2nd CC, 1st EPSILON and 1st DELTA – expected values*

Structure and numbers of institutions supported by TA CR*

Organization type	Size/Type of organization	Number of occurrence	Subsidy (in mil. CZK)
Enterprises	Overall	1 695	7 888,5
	Small enterprises	693	2 604,8
	Medium enterprises	420	2 036,5
	Large enterprises	582	3 247,2
Research Organizations	Overall	1 627	8 986,0
	Public universities	1 017	5 949,7
	Academy of Science CR	204	1 195,8
	Other public ROs	187	647,5
	Other ROs	215	1 192,9
Overall		3 322	16 874,5

**4th ALFA, 2nd CC, 1st EPSILON and 1st DELTA – expected values*

Ongoing Programmes

- ALPHA** – Searching for “smart solutions“ in areas of progressive technologies, sustainable transportation and protection of the environment
- BETA** – Public procurement in R&D for the needs of public administration bodies
- GAMMA** – Support for the commercialization of outputs of applied research and development
- DELTA** – support of international collaboration in R&D
- EPSILON** – replaces program ALPHA, based on ministerial strategies and National priorities of applied research
- OMEGA** – Searching for “smart solutions“ in the field of applied social sciences
- Competence Centres** – Support for the collaboration between research organizations and companies

DELTA Programme Basic information

“Programme for the support of applied research and experimental development through joint projects of technology and innovation agencies”

Support of joint projects of enterprises and research organizations supported by TA CR and leading foreign technology and innovation (or similar) agencies with which, by the time of the call for proposals, TA CR has/will have initiated a cooperation

-> Memorandum of Understanding is a desired form of cooperation agreement

DELTA Programme

Basic information

- Programme is not thematically focused;
- Topics of joint projects will be set ad hoc
 - Areas, in which projects will be accepted, may differ not only per each partner agency, but also per each call for proposals;
- The aim of the programme is:
 - To increase number of real R&D outputs in areas for which there is a consent of both TA CR and foreign partner,
 - which will be successfully embodied in the practice and thus will contribute to the competitiveness of the Czech Republic
 - doing this by supporting bilateral or multilateral cooperation.

DELTA Programme Basic information

- Programme duration is 6 years - 2014 to 2019,
- Call for proposals:
 - Max. 4 times per year (1st in 2014, then in 2015 and 2016, in case there would be enough resources, also in 2017);
 - Published for projects solved in cooperation with one or more partner agencies;
- Project duration max. 3 years;
- Maximum support rate per project 25 million CZK;
- Supposed number of supported projects yearly – 10 projects!


DELTA Programme Programme Characteristics

- Not a classic programme – it requires:
 - Active creation of conditions for a successful implementation of the programme – maximal facilitation of a match-making of Czech and foreign institutions, otherwise there will not be enough projects applying.
 - As flexible conditions as possible.
- Need for securing a service for a IPR protection – TA CR will have to be an active partner for the beneficiaries.
- Non-European states are the priority.
- On the Czech side either companies, or companies + Research organisations.


DELTA Programme Overall Expenditures

Total expenditure on the programme and the maximum aid intensity

The total expenditure on the programme and the maximum aid intensity are listed in the following table:

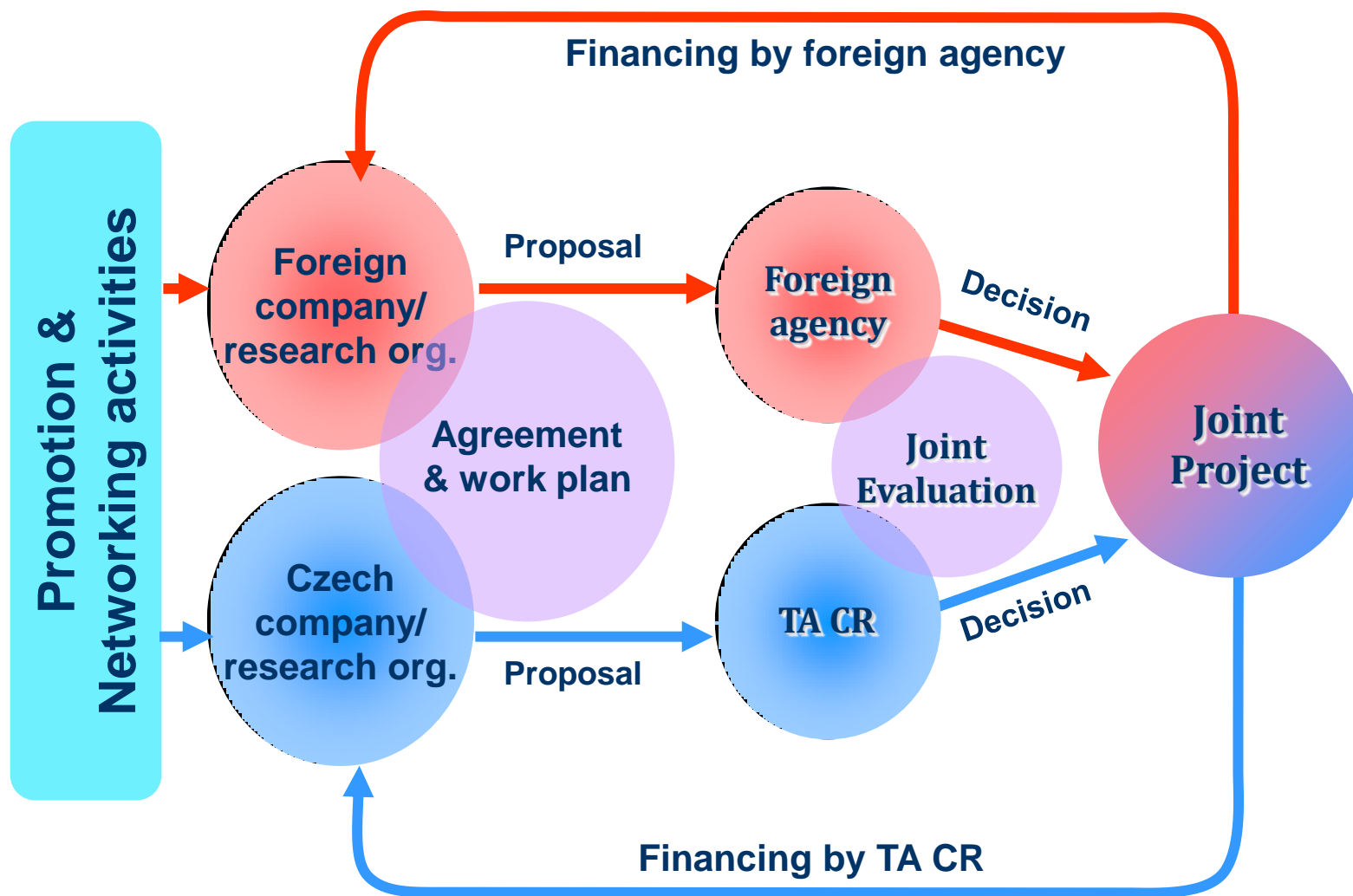
 [mil. CZK]

YEAR	2014	2015	2016	2017	2018	2019	Total
Total expenditure	100,0	112,4	94,6	270,4	270,4	191,5	1 039,2
Expenditure from the state budget	74,0	83,2	70,0	200,0	200,0	141,6	768,8
Private resources	26,0	29,2	24,6	70,4	70,4	49,9	270,4



The maximum aid intensity for the entire programme is 74 %.

DELTA Programme Financing Scheme



T A
Č R

TA CR and Chinese Partners

TA CR has 4 MoUs with Chinese partners:

1. Sichuan Provincial Investment Promotion Bureau
2. Zhejiang Science and Technology Department
3. Jiangsu Provincial Department of Science and Technology
4. Ministry of Science and Technology (Taiwan)

DELTA 1

supported projects

Project number	Project name	Applicant	Further applicants
TF01000093	Upgrading of bio-oil into fuel grade diesel (Rafinace bio-oleje na palivo pro vznětové motory)	Euro Support Manufacturing Czechia, s.r.o.	Výzkumný ústav anorganické chemie, a.s.
TF01000084	Research and development of advanced PVD/PECVD lowtemperature plasma system for deposition of functional thin and thick TiO2 films for industrial applications (Výzkum a vývoj pokročilého PVD/PECVD nízkoteplotního plazmatického systému pro depozice funkčních oxidů se zaměřením na tenké a tlusté vrstvy TiO2 pro průmyslové aplikace)	IQ Structures, s.r.o.	Fyzikální ústav AV ČR, v.v.i.
TF01000076	Genetic program for 2 lines hybrid of layers (breed) for egg production and cockerel meat production in Vietnam and South Asia farming condition Genetický program, který dá vznik dvouliniovému hybridu nosnic (plemene) pro produkci vajec a pro produkci masa kohoutů v podmínkách farmového hospodaření ve Vietnamu a v jižní Asii.	LÍHEŇ STUDENEC, s.r.o.	BIOPHARM, Výzkumný ústav biofarmacie a veterinárních léčiv a.s., Milan Tyller
TF01000091	Security of Mobile Devices and Communication Bezpečnost mobilních zařízení a komunikace	Vysoká škola báňská - Technická univerzita Ostrava	Code Creator, s.r.o., SATTURN HOLEŠOV spol. s r.o.

T A
Č R

Thank you for your attention.



Web: www.tacr.cz

Facebook: <http://www.facebook.com/tacr.cz>

LinkedIn: <http://www.linkedin.com/company/technologick-agentura-esk-republiky>

Twitter TA CR: http://twitter.com/TACR_cz

YouTube: <https://www.youtube.com/channel/UC1arGrQjwIKbQGDrpIB-n0A>

Google+: <http://plus.google.com/u/0/b/105572200316564197586/105572200316564197586/posts>